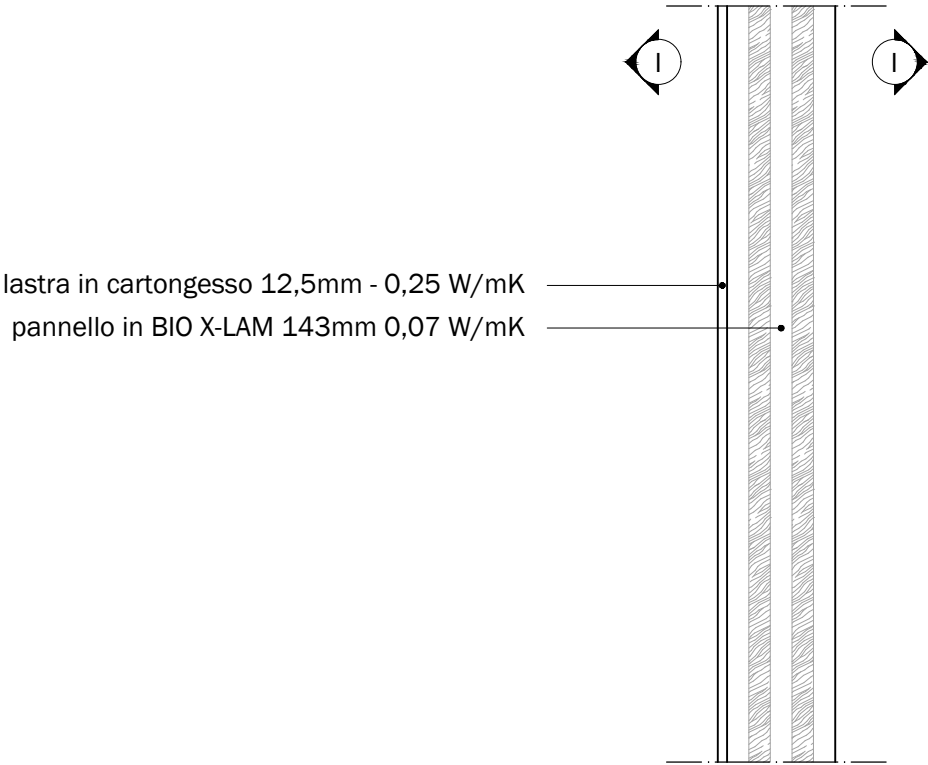
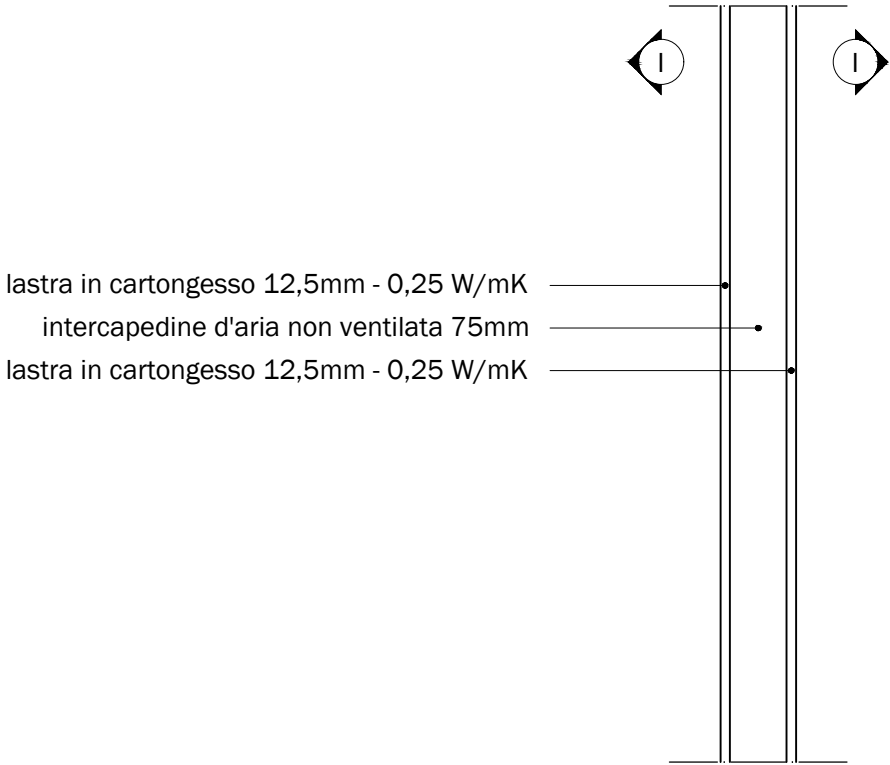


Partizione verticale interna P3 - 155mm
U = 0,425 W/m²K



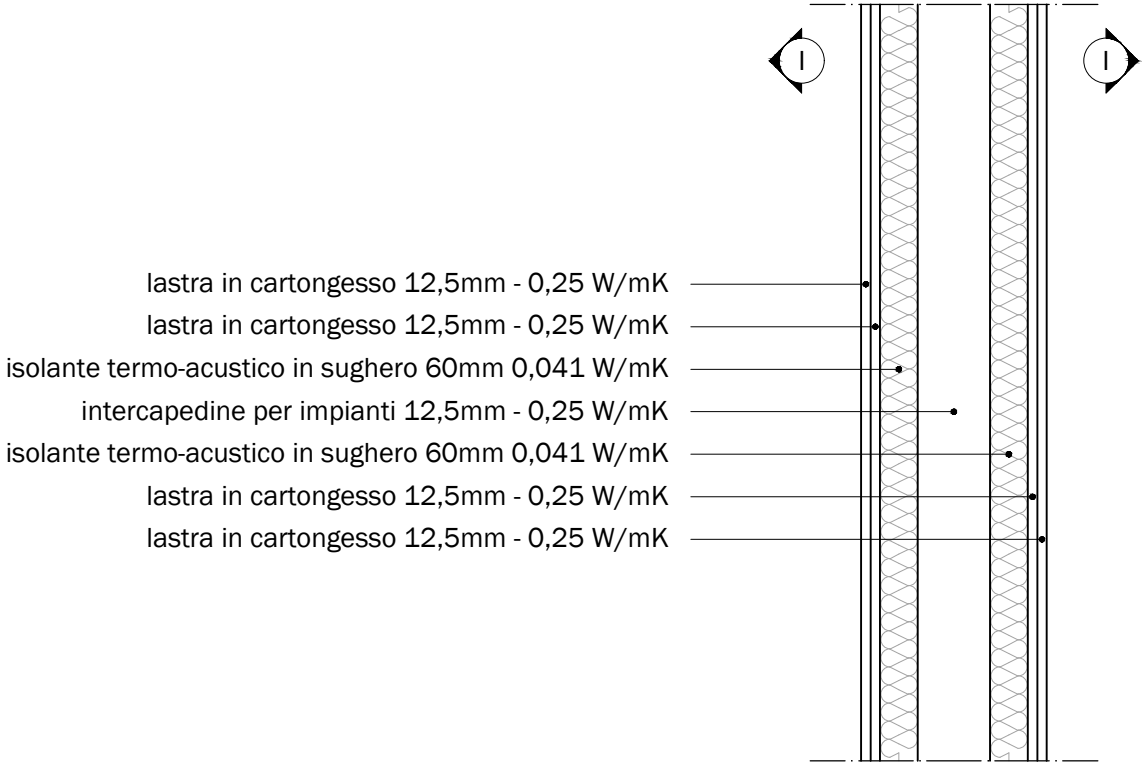
lastra in cartongesso 12,5mm - 0,25 W/mK
pannello in BIO X-LAM 143mm 0,07 W/mK

Partizione verticale interna P3 - 100mm
U = 1,852 W/m²K



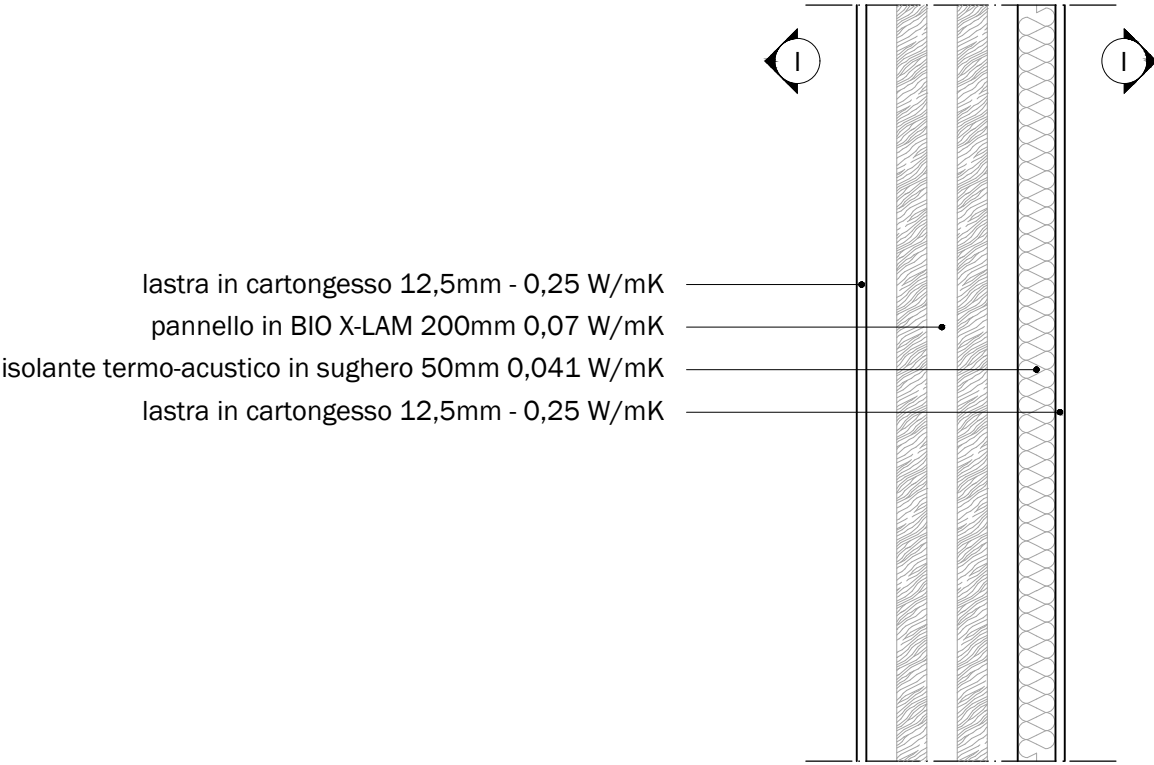
lastra in cartongesso 12,5mm - 0,25 W/mK
intercapedine d'aria non ventilata 75mm
lastra in cartongesso 12,5mm - 0,25 W/mK

Partizione verticale interna P3 - 245mm
U = 0,325 W/m²K



lastra in cartongesso 12,5mm - 0,25 W/mK
lastra in cartongesso 12,5mm - 0,25 W/mK
isolante termo-acustico in sughero 60mm 0,041 W/mK
intercapedine per impianti 12,5mm - 0,25 W/mK
isolante termo-acustico in sughero 60mm 0,041 W/mK
lastra in cartongesso 12,5mm - 0,25 W/mK
lastra in cartongesso 12,5mm - 0,25 W/mK

Partizione verticale interna P3 - 275mm
U = 0,228 W/m²K



lastra in cartongesso 12,5mm - 0,25 W/mK
pannello in BIO X-LAM 200mm 0,07 W/mK
isolante termo-acustico in sughero 50mm 0,041 W/mK
lastra in cartongesso 12,5mm - 0,25 W/mK